

MPW
Michigan Partnership
for Animal Welfare
*Working together for the good
of the animals in Michigan.*

GRANTS TO BE
AWARDED
BY PETCO
FOUNDATION



ANIMAL WELFARE
CONFERENCE
BUILDING BRIDGES 2008

Working together for the good
of the animals in Michigan



Presented by:



PETCO
FOUNDATION

October 22-24, 2008
Grand Rapids, Michigan

The Michigan Partnership for Animal Welfare (MPAW) is pleased to present the fifth annual Animal Welfare Conference-Michigan's largest educational and networking event geared towards helping you help the animals in your care. Each year, hundreds of animal welfare professionals gather to learn from animal welfare experts and to network with other individuals and organizations who want to make a difference for animals. Whether you are already working in the animal care field, or just want to learn how you can improve the lives of animals, MPAW's Animal Welfare Conference is the right place for you. We hope you will join us on October 23rd and 24th at the Crowne Plaza in downtown Grand Rapids!

Who Should Attend?

- Shelter and Rescue Staff
- Volunteers
- Management
- Board Members
- Animal Control Officers
- Veterinarians
- All Others Interested in Caring for Animals!

Presented by:



Premier Sponsors:



Gold Exhibitors:



What Others Have Said About the AWC:

"The sessions were progressive and informative.... an excellent opportunity to network, and a must for anyone in the animal welfare industry."

~ Kelly Sears, Shelter Manager,
Capital Area Humane Society

"I highly recommend attending the AWC to anyone interested in animal welfare. It is the place for veterans, as well as the newcomers, to network and learn about the latest and greatest in our field."

~ Elaine Greene, Executive Director
Friends for the Dearborn Animal Shelter



Crowne Plaza Grand Rapids

Located just off I-96, with a complimentary airport shuttle, the Crowne Plaza Grand Rapids Hotel is a great destination. A block of rooms have been reserved at the group rate of \$89 per night plus tax (must make reservation by October 8th to secure group rate). Take advantage of the complimentary high-speed Internet access, full service business center, and self-parking. Call 616-957-1770 to make your reservation.

For more information visit www.cpgrandrapidshotel.com

For more information call
1.866.MHUMANE (648.6263)
or visit www.mpaw.org

session schedule

Wednesday, October 22

WELCOME RECEPTION 7:00 p.m. - 9:00 p.m.

Thursday, October 23

REGISTRATION OPEN 7:00 a.m.

CONTINENTAL BREAKFAST 7:30 a.m. - 8:15 a.m.

SESSION I 8:30 a.m. - 10:00 a.m.

How Nonprofits & Animal Controls
Can Work Together!

Canine Body Language –
Part I

Operating an Equine Rescue -
What it takes!

BREAK

SESSION II 10:30 a.m. - Noon

Lost Pet Reunification–
Improving the Process and
Attitudes Towards Free–
Roaming Cats

Canine Body Language –
Part II

Investigating Equine Cruelty–
Making the Case

Grantwriting 101

LUNCH Noon - 1:15 p.m.

SESSION III 1:30 p.m. - 3:00 p.m.

The Microchip World –
Recent Advances and
Options for Shelters

Intake & Interviews by
Appointment –
“Reservations Required”

Enrichment and Training for
Dogs in the Progressive Shelter

Humane Animal Capture and
Handling – A Field Guide Basic

BREAK

SESSION IV 3:30 p.m. - 5:00 p.m.

Helping Adopters Succeed:
Creating a Sustainable Adopter
Support Program

Shelter Zoonosis Update

Advanced Animal Capture,
Handling and
Technological Applications

Muzzling Dangerous Dogs: Is
Canine Profiling Effective?

Friday, October 24

REGISTRATION OPEN 7:00 a.m.

CONTINENTAL BREAKFAST 7:30 a.m. - 8:45 a.m.
AniCare Presentation from Animals & Society Institute

SESSION V 9:00 a.m. - Noon

Population Management for Shelter Animal Health and Welfare

TNR: Working with the Community, the Law & Wildlife

session schedule

1 session
one

Thursday, October 23 | 8:30 a.m. – 10:00 a.m.

How Nonprofits & Animal Controls Can Work Together!

Marli Drum, Superintendent, Columbia Animal Services, and

Stevie Cote, President & Board Chair of Friends For The Dearborn Animal Shelter

Is your municipal animal control struggling due to limited financial resources? Whether you are an animal control officer, rescue worker, volunteer or concerned citizen, this session will teach you how to get the results you want for animals in your community. Learn from an animal control agency and a nonprofit organization that successfully developed functional partnerships in their community to improve their municipal animal control. Columbia Animal Services from South Carolina and Friends For the Dearborn Animal Shelter will provide you with information on how they turned their local animal controls around by working with them, not against them.

Canine Body Language – Part I

Sarah Kalnajs B.A., CPDT, CDBC

What is your dog saying to you and to other dogs? How can you tell when play turns to aggression? How do dogs show friendliness, fear, or stress? Attend this session to learn more about common canine body language and improve your understanding and interaction with the dogs in your care.



Operating an Equine Rescue - What it takes!

Brooke L. Vransy, Director of Programs and Emergency Services, Days End Farm Horse Rescue

Operating an equine rescue and rehabilitation facility is heavily consuming of all critical resources: time, money and space. How well these resources are managed directly effects the horses, your community, and organizational supporters. Building a strong operational foundation, policies and procedures, is crucial for the Rescue/Rehab Facility. During this session, we'll discuss critical resources and operational challenges. We'll review best practices, policies, and procedures that aid in the successful management of an equine rehabilitation/rescue facility. "What works and what doesn't in a nutshell."

2 session
two

Thursday, October 23 | 10:30 a.m. – 12:00 p.m.

Lost Pet Reunification – Improving the Process and Attitudes Towards Free-Roaming Cats

Linda Lord, D.V.M., PhD, Ohio State University

The first part of the session focuses on reuniting lost pets and their owners. What do people do in the search process? What is effective, and how can we get more animals back to their homes? The second part of the session focuses on new information from Ohio on the attitudes and perceptions people have towards free-roaming cats. Learn about feeding practices, attitudes towards laws and regulations, and differences between different demographic groups in these attitudes.



Canine Body Language – Part II

Sarah Kalnajs B.A., CPDT, CDBC

Continuation of Part I. (Please note that it is not recommended that you attend Part II if you have not attended Part I, as it is a continuation of the previous session.)

session schedule

2 session
two
cont.

Thursday, October 23 | 10:30 a.m. – 12:00 p.m.

Investigating Equine Cruelty - Making the Case

Brooke L. Vransy, Director of Programs and Emergency Services, Days End Farm Horse Rescue

The United States is currently facing an “Unwanted Horse Issue,” or overpopulation. As a result, more and more cases of neglect and abuse are being reported. Formal investigation training that is “equine specific” is necessary due to the largely specific needs of the horse; the management and care of equines is diverse in comparison to that of the more common companion animal. This being so, it’s hard to apply standard investigation forms and tools. Key evidence can go unobserved if investigators aren’t properly trained to identify and document “equine” cases. By learning about proper horse care and management, an investigator increases his or her ability to build a solid case and protect the welfare of our beloved equines. This session will start with an overview on the care needs of a healthy horse: medical, nutritional and daily management. Then, we’ll discuss specific administrative tools that can be used to build a strong case during equine investigations such as: Minimum Standards of Care, The Henneke Body Condition Score, Photography, and Rehabilitation Profiling. This session includes case histories and written and photo documentations.



Grantwriting 101

Paul Jolly, Vice President and Executive Director of the PETCO Foundation

Grant funding is a critical revenue source to any and all non profit organizations, regardless of size. Come learn the basics of writing a successful grant – what funders are looking for, what they don’t want to see and what you can do to improve your chances of writing a winning proposal. **Best of all, an interactive writing session will result in the awarding of at least three grants by the PETCO Foundation.**

CAN'T MISS SESSION FOR FUNDRAISERS!

3 session
three

Thursday, October 23 | 1:30 p.m. – 3:00 p.m.

The Microchip World – Recent Advances and Options for Shelters

Linda Lord, D.V.M., PhD, Ohio State University

Are you confused by all the choices you have for microchipping pets? Do you want to learn more about the nuts and bolts of microchipping, including the different scanners and frequencies? Do you want to know more about how the registration process is working? If so, this session will help you to navigate the microchipping world and hopefully get more lost pets reunited with their owners.

Intake & Interviews by Appointment – “Reservations Required”

James Bias, CAWA, President, SPCA of Texas

The SPCA of Texas based in Dallas was faced with a challenge all too common for sheltering organizations – accepting all animals, on demand, regardless of capacity, funding and community support. This organization, after 30 years operating under this standard, questioned this process and how it was impacting the public, the animals and the daily operation of the shelter. Information will be shared on how the organization changed its method of intake and modified the interview process for admitting animals. Discover the steps taken by the organization to inform and educate the Board, staff, volunteers and public. You may be surprised by the areas of greatest resistance and ease. Over two years later, you will be presented with the early reports of how this paradigm shift has impacted the organization and community.

Enrichment and Training for Dogs in the Progressive Shelter

Leigh Siegfried, CPDT, and Elizabeth Marsden, CPDT, Mission Dog

Learn how to increase adoptability and well-being of dogs in short- and long-term shelter environments. Provide mental and physical stimulation regardless of facility budget or size by using the shelter’s existing resources. Learn how to match compatible cagemates, create playgroups, and increase holding capacity while predicting true dog aggression.

Humane Animal Capture and Handling – A Field Guide Basic

Dave Pauli, Northern Rockies Team Leader, Humane Society of the United States

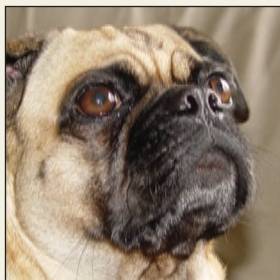
It is often necessary to rescue animals from a variety of risky situations in the field. This interactive workshop will cover all aspects of animal capture and handling including methods of field capture, humane protocols, applications of various levels of restraint, and an overriding message of considering the animal’s journey through its predominant sensory capabilities and behavioral displays.

For more information call 1.866.MHUMANE (648.6263)
or visit www.mpaw.org

session schedule

4 session
four

Thursday, October 23 | 3:30 p.m. – 5:00 p.m.



Helping Adopters Succeed: Creating a Sustainable Adopter Support Program

Linda Reider, Director of Animal Welfare, Michigan Humane Society

You've made the match, but what happens when they walk out the door? Will your adopters get the help they need and become your long-term supporters? Learn from the Michigan Humane Society how to start an adopter support program that will reach adopters when they most need to hear from you. Learn to gather crucial information about how adopted animals are adjusting, and how you can get honest feedback about your customer service.

Shelter Zoonosis Update

Steve Thompson, D.V.M., Clinical Associate Professor, Purdue University

Animal welfare professionals often care for animals that are sick or injured. Some of the animals you encounter may have diseases that are contagious to humans. Learn about common zoonotic diseases found in shelter animals, and what precautions you should take to ensure that your staff, volunteers and adopters are protected.

Advanced Animal Capture, Handling and Technological Applications

Dave Pauli, Northern Rockies Team Leader, Humane Society of the United States

This thought-provoking workshop will use real life case studies to discuss the need for both mitigation and planning to address some of the key challenges to community animal control and education. Issues such as feral cats, urban wildlife, volume capture, field protocols, and good standards of operation will be covered. There will also be a general discussion of applying a half dozen new technologies to improve our field experiences. These could include GPS, infra-red, remote immobilization, evidence collection, and automotive technologies applied to daily animal care and control situations.

Muzzling Dangerous Dogs: Is Canine Profiling Effective?

Debora M. Bresch, Esq., Legislative Liaison, ASPCA Eastern Region

A dog attacks and legislators act. Know the facts regarding dog attacks and which public policies do and don't work. Learn how to craft effective dangerous dog laws to protect the public and the rights of responsible dog owners.

5 session
five

Friday, October 24 | 9:00 a.m. – 12:00 p.m.

Population Management for Shelter Animal Health and Welfare

Sandra Newbury, D.V.M., National Shelter Medicine Extension Veterinarian

Preventative practices save lives and money, improve the lives of the animals we care for, and even reduce staff stress. Population management is the most fundamental and powerful preventative tool we have. When we carefully implement management practices designed to minimize stress and risk of infectious disease while maximizing welfare, we can measure and communicate the positive impact to the whole community, because the outcome is healthy animals, healthy shelters, and a healthier community. In Part One, we will cover what we know about individual and population factors that affect shelter health and animal outcomes. In Part Two, we will examine how we can use what we know as practical tools to make things better.



TNR: Working with the Community, the Law & Wildlife

Bryan Kortis, Executive Director, Neighborhood Cats

Trap-Neuter-Return is fast becoming the preferred approach for humane feral cat management. But when it comes to implementing TNR throughout a community, there is much more involved than simply trapping and sterilizing the cats. This workshop will examine three key areas to practicing large-scale TNR including basic strategies required for success, understanding the law, and new programs which incorporate cooperative strategies and turn wildlife interests into partners instead of foes.

For more information call 1.866.MHUMANE (648.6263)
or visit www.mpaw.org

registration form

Name: _____ Position / Title: _____

Company / Organization: _____

Address / City / State / Zip: _____

Phone: () _____ Fax: () _____

Email: _____

WELCOME RECEPTION - Moderated Topic Discussions

Wednesday, October 22

Yes, I will be attending the 7:00 p.m. welcome reception Suggested Topic(s): _____

SESSION OPTIONS (choose one from each session)

Thursday, October 23

Session I - 8:30 a.m.

- How Nonprofits & Animal Controls Can Work Together!
- Canine Body Language – Part I
- Operating an Equine Rescue

Session II - 10:30 a.m.

- Lost Pet Reunification
- Canine Body Language – Part II
- Investigating Equine Cruelty
- Grantwriting 101

Session III - 1:30 p.m.

- The Microchip World – Recent Advances and Options for Shelters
- Intake & Interviews by Appointment
- Enrichment & Training for Dogs in the Progressive Shelter
- Humane Animal Capture & Handling – A Field Guide Basic

Session IV - 3:30 p.m.

- Helping Adopters Succeed
- Shelter Zoonosis Update
- Advanced Animal Capture, Handling & Technological Applications
- Muzzling Dangerous Dogs: Is Canine Profiling Effective?

SESSION OPTIONS (choose one from each session)

Friday, October 24

Session V - 9:00 a.m.

- Population Management for Shelter Animal Health & Welfare
- TNR: Working with the Community, the Law & Wildlife

Please indicate your meal preference:

- Non-Vegetarian
- Vegetarian
- Vegan

Registration Fees:

Individuals: Thursday & Friday \$100 (SAVE \$25!) Thursday only \$75 Friday only \$50

Groups:

Take 10% off per person for two or more attendees from the same organization. (Must submit group registrations together to qualify for discount)

Yes, I am part of a group | Group Name: _____

Payment Method:

Check enclosed made payable to Michigan Partnership for Animal Welfare

Charge my: Visa MasterCard

Credit Card Number: _____ Exp. Date: _____

Signature: _____

PLEASE FAX OR MAIL ONE REGISTRATION FORM PER PERSON WITH PAYMENT TO:

Fax: (248) 283-5700

Mail: MPAW • 30300 Telegraph Road, Suite 220

Bingham Farms, Michigan 48025



ANIMAL WELFARE
CONFERENCE
BUILDING BRIDGES 2008

We're heading west
to Grand Rapids!



Michigan Partnership
for Animal Welfare

*Working together for the good
of the animals in Michigan.*

30300 Telegraph Road • Suite 220
Bingham Farms, Michigan 48025
www.mpaw.org